



OMEGA
PRODUCTS
INTERNATIONAL, INC.

"The Professional's Choice"

AKROGOLD SOFFIT AND SCREEN WALL DEFS TYPICAL DETAILS

TABLE OF CONTENTS

AGS 01	APPLICATION OVER APPROVED SHEATHING
AGS 02	TYPICAL SCREEN WALL WITH METAL CAP
AGS 03	TYPICAL SOFFIT DETAIL

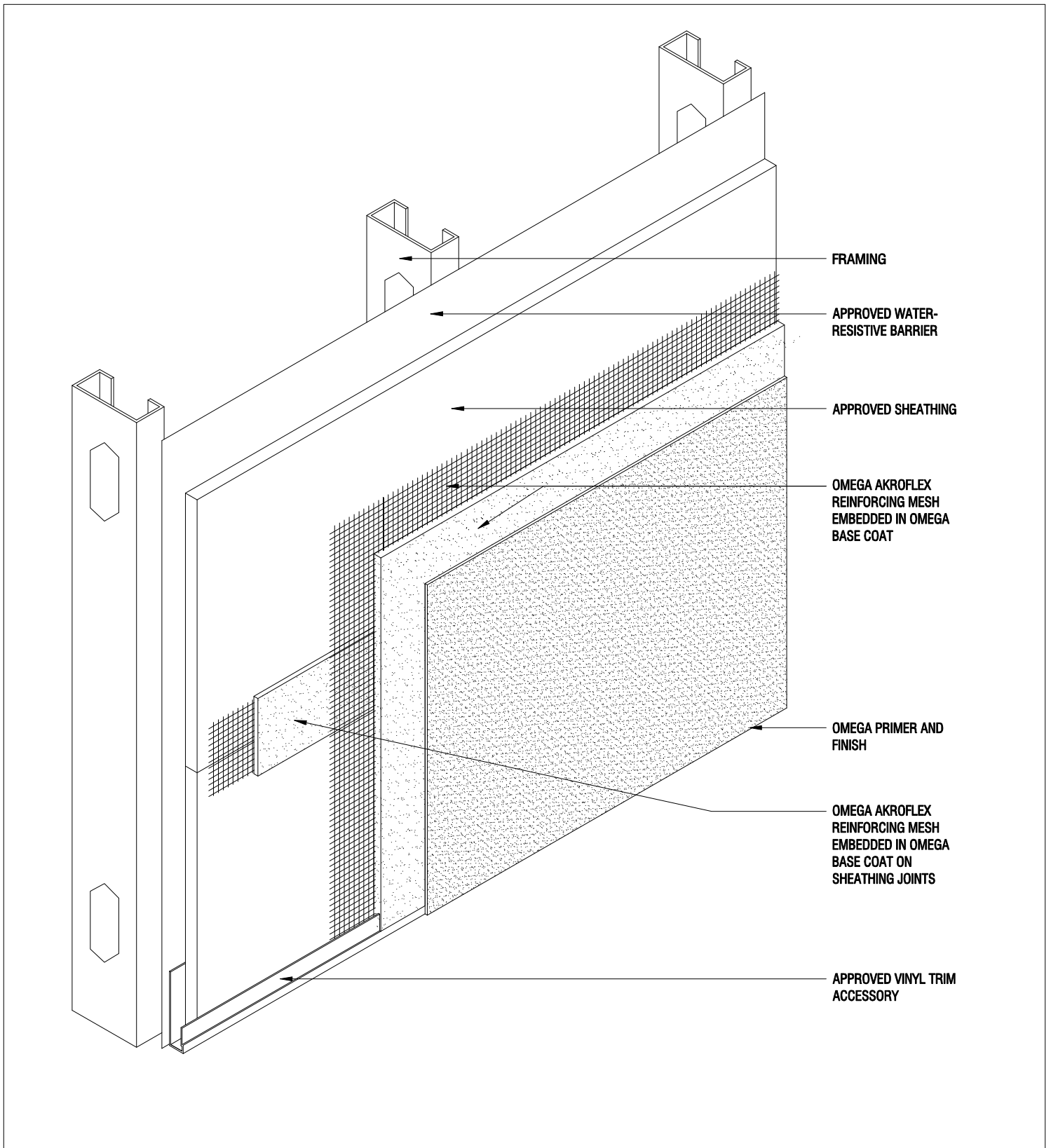
6101 Dexter St.
Commerce City, CO 80022
Phone: (303) 287-4012
Fax: (303) 287-4053

3362 Fitzgerald Road
Rancho Cordova, CA 95742
Phone: (916) 635-3335
Fax: (916) 635-8995

Corporate Offices
1681 California Ave. Corona, CA 92881
Phone: (951) 737-7447
Fax: (951) 520-2594
www.omega-products.com

5420 Aldrin Court
Bakersfield, CA 93313
Phone: (661) 835-0155
Fax: (661) 835-0402

5576 Wynn Road
Las Vegas, NV 89118
Phone: (702) 739-9040
Fax: (702) 739-9059



FRAMING

APPROVED WATER-RESISTIVE BARRIER

APPROVED SHEATHING

OMEGA AKROFLEX REINFORCING MESH EMBEDDED IN OMEGA BASE COAT

OMEGA PRIMER AND FINISH

OMEGA AKROFLEX REINFORCING MESH EMBEDDED IN OMEGA BASE COAT ON SHEATHING JOINTS

APPROVED VINYL TRIM ACCESSORY

THE ARCHITECTURE, ENGINEERING, AND DESIGN OF THE PROJECT USING OMEGA PRODUCTS IS THE RESPONSIBILITY OF THE PROJECT'S DESIGN PROFESSIONAL. ALL SYSTEMS MUST COMPLY WITH LOCAL BUILDING CODES AND STANDARDS. THIS DETAIL IS FOR GENERAL INFORMATION AND GUIDANCE ONLY, AND OMEGA INC. SPECIFICALLY DISCLAIMS ANY LIABILITY FOR THE USE OF THIS DETAIL AND FOR THE ARCHITECTURE, DESIGN, ENGINEERING, OR WORKMANSHIP OF ANY PROJECT. THE PROJECT DESIGN PROFESSIONAL DETERMINES, IN ITS SOLE DISCRETION, WHETHER THIS DETAIL OR A FUNCTIONALLY EQUIVALENT ALTERNATIVE IS BEST SUITED FOR THE THE PROJECT. USE OF A FUNCTIONALLY EQUIVALENT DETAIL DOES NOT VIOLATE OMEGA'S WARRANTY. THIS DETAIL IS SUBJECT TO CHANGE WITHOUT NOTICE. CONTACT OMEGA TO INSURE YOU HAVE THE MOST RECENT VERSION.



CORPORATE OFFICE
 1681 CALIFORNIA AVE., CORONA, CA 92881
 E-MAIL: INFO@OMEGA-PRODUCTS.COM
 WEBSITE: WWW.OMEGA-PRODUCTS.COM

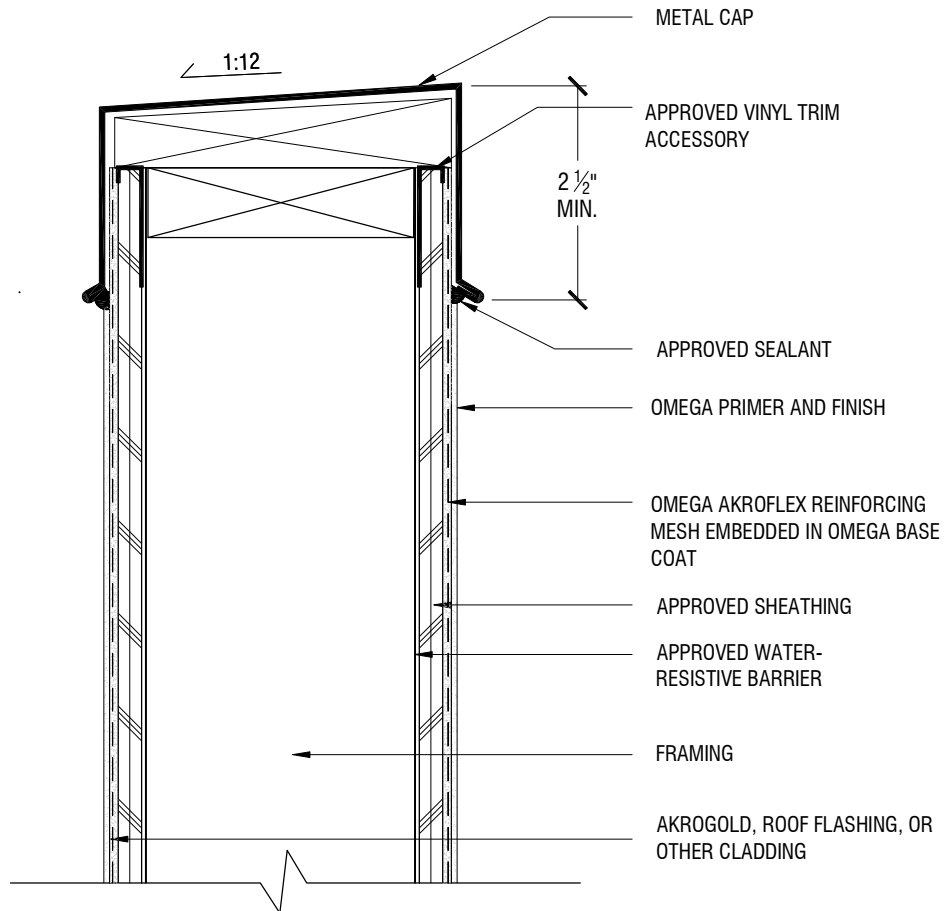
AKROGOLD DEF SYSTEM DETAIL

APPLICATION OVER APPROVED SHEATHING

SCALE: 3"=1'-0"

DRAWING NO.: AGS 01.00

DRAWN: JUNE 2009



THE ARCHITECTURE, ENGINEERING, AND DESIGN OF THE PROJECT USING OMEGA PRODUCTS IS THE RESPONSIBILITY OF THE PROJECT'S DESIGN PROFESSIONAL. ALL SYSTEMS MUST COMPLY WITH LOCAL BUILDING CODES AND STANDARDS. THIS DETAIL IS FOR GENERAL INFORMATION AND GUIDANCE ONLY, AND OMEGA INC. SPECIFICALLY DISCLAIMS ANY LIABILITY FOR THE USE OF THIS DETAIL AND FOR THE ARCHITECTURE, DESIGN, ENGINEERING, OR WORKMANSHIP OF ANY PROJECT. THE PROJECT DESIGN PROFESSIONAL DETERMINES, IN ITS SOLE DISCRETION, WHETHER THIS DETAIL OR A FUNCTIONALLY EQUIVALENT ALTERNATIVE IS BEST SUITED FOR THE THE PROJECT. USE OF A FUNCTIONALLY EQUIVALENT DETAIL DOES NOT VIOLATE OMEGA'S WARRANTY. THIS DETAIL IS SUBJECT TO CHANGE WITHOUT NOTICE. CONTACT OMEGA TO INSURE YOU HAVE THE MOST RECENT VERSION.



CORPORATE OFFICE
 1681 CALIFORNIA AVE., CORONA, CA 92881
 E-MAIL: INFO@OMEGA-PRODUCTS.COM
 WEBSITE: WWW.OMEGA-PRODUCTS.COM

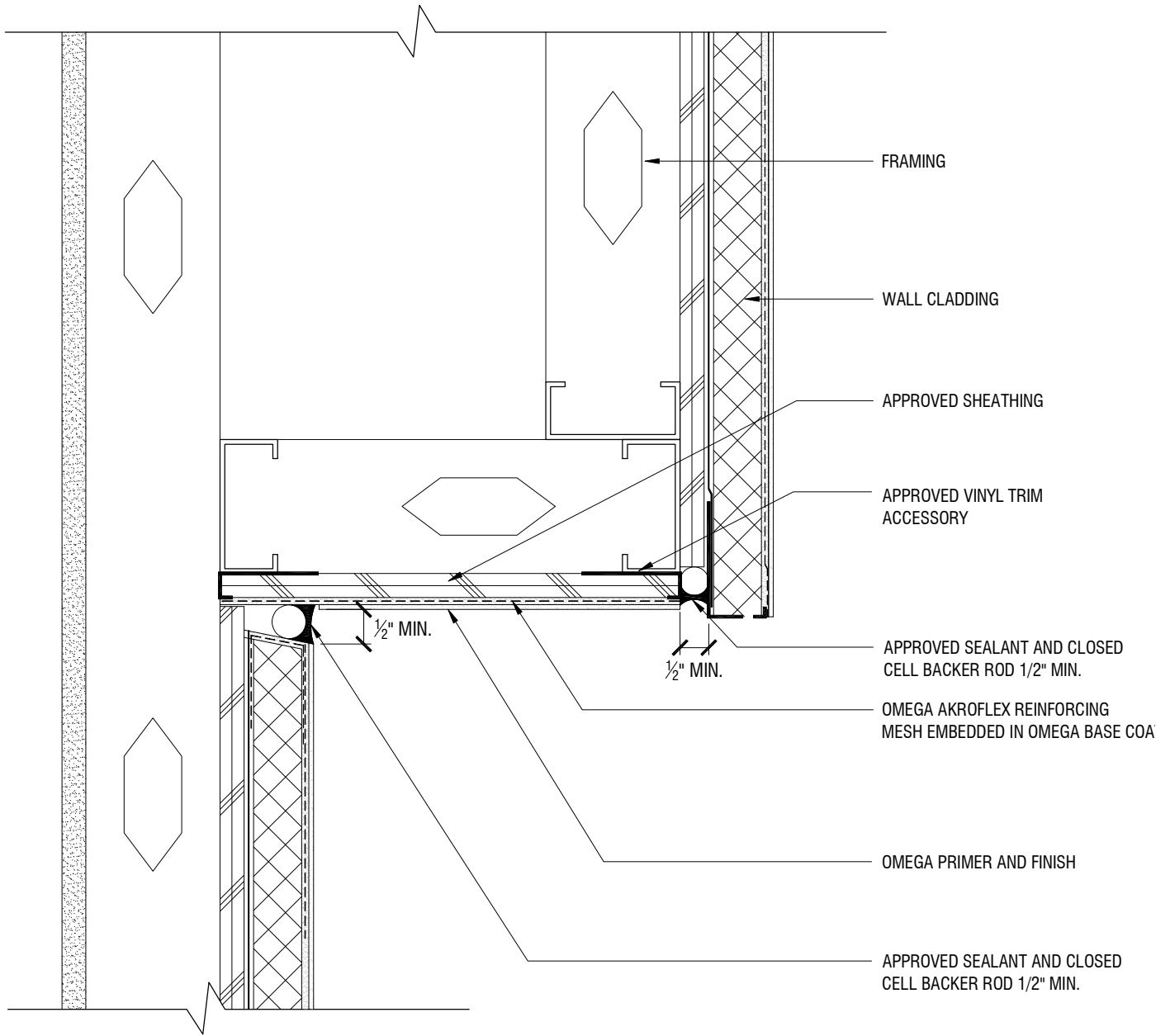
AKROGOLD DEF SYSTEM DETAILS

TYPICAL SCREEN WALL WITH METAL CAP

SCALE: 3"=1'-0"

DRAWING NO.: AGS 02.00

DRAWN: JUNE 2009



THE ARCHITECTURE, ENGINEERING, AND DESIGN OF THE PROJECT USING OMEGA PRODUCTS IS THE RESPONSIBILITY OF THE PROJECT'S DESIGN PROFESSIONAL. ALL SYSTEMS MUST COMPLY WITH LOCAL BUILDING CODES AND STANDARDS. THIS DETAIL IS FOR GENERAL INFORMATION AND GUIDANCE ONLY, AND OMEGA INC. SPECIFICALLY DISCLAIMS ANY LIABILITY FOR THE USE OF THIS DETAIL AND FOR THE ARCHITECTURE, DESIGN, ENGINEERING, OR WORKMANSHIP OF ANY PROJECT. THE PROJECT DESIGN PROFESSIONAL DETERMINES, IN ITS SOLE DISCRETION, WHETHER THIS DETAIL OR A FUNCTIONALLY EQUIVALENT ALTERNATIVE IS BEST SUITED FOR THE THE PROJECT. USE OF A FUNCTIONALLY EQUIVALENT DETAIL DOES NOT VIOLATE OMEGA'S WARRANTY. THIS DETAIL IS SUBJECT TO CHANGE WITHOUT NOTICE. CONTACT OMEGA TO INSURE YOU HAVE THE MOST RECENT VERSION.



CORPORATE OFFICE
 1681 CALIFORNIA AVE., CORONA, CA 92881
 E-MAIL: INFO@OMEGA-PRODUCTS.COM
 WEBSITE: WWW.OMEGA-PRODUCTS.COM

AKROGOLD DEF SYSTEM DETAIL

TYPICAL SOFFIT DETAIL

SCALE: 3"=1'-0"

DRAWING NO.: AGS 03.00

DRAWN: JUNE 2009