

Crack Isolation System

A System for Stucco Crack Mitigation and Restoration

PRODUCTS INTERNATIONAL

Crack Isolation System (CIS) is designed to mitigate surface cracking in new and existing plaster systems by integrating woven fiberglass mesh into the base coat prior to applying the finish. The CI System can either embed the mesh directly into the wet brown coat or embed mesh into an acrylic modified base coat over the existing plaster base coat or finish. When properly installed, this mesh reinforces the stucco and helps to reduce the appearance of cracks.

System Description

The Crack Isolation System may be applied in three different methods:

Method One: Mesh is embedded directly into the wet brown coat.

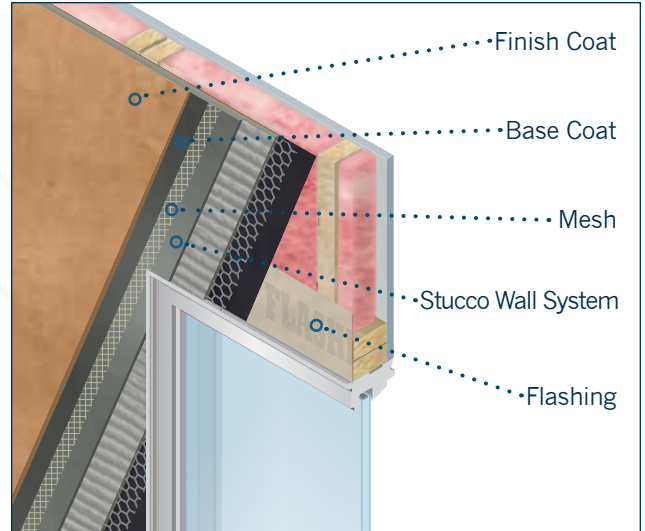
Method Two: Mesh is embedded into an approved base coat over a cement plaster brown coat.

Method Three: Mesh is embedded into an approved base coat over an existing stucco or acrylic finish.

Areas of Use

The Crack Isolation System is an excellent choice for new or retrofit commercial, residential, or institutional projects. The CI System may be applied over the following properly prepared substrates:

- **Method One:**
 - One Coat Stucco Systems
 - Three Coat Stucco Systems
- **Method Two:**
 - One Coat Stucco Systems
 - Three Coat Stucco Systems
 - Masonry
 - Poured-in-place and/or tilt-up concrete
- **Method Three:**
 - Stucco Finishes (painted or unpainted)
 - Acrylic Stucco Finishes (painted or unpainted)
 - Interior Plaster/Drywall Finishes (painted or unpainted)



Method Two over three coat stucco.

CRACK ISOLATION ADVANTAGES

FEATURES	BENEFITS
<i>Mesh Reinforced</i>	Reduces stucco surface cracking
<i>Polymer-modified Base Coats</i>	Bonds to various substrates and water-resistant
<i>System Warranty</i>	Up to 15 year warranty when used in combination with other Omega products

Approved by: _____

Date: _____

System Components

The following products are components in the Crack Isolation System. Please see the product's data sheet for additional information.

Base Coats

- CI-Base (50 lb or 90 lb bag): Field mixed with water.
- DryBond (50 lb bag): Field mixed with water.
- StyroGlue (5 gal pail): Field mixed with portland cement.
- StyroGlue DryBond (50 lb bag): Field mixed with water.
- FoamTek (50 lb bag): Field mixed with water.

Mesh

Omega Reinforcing Meshes are alkali resistant, woven glass fiber fabrics specially designed to be used with approved Omega base coats and are available as:

- OCS or AkroFlex Reinforcing Starter mesh: 4.5 oz, 9.5 inch x 150-foot roll
- OCS or AkroFlex Reinforcing Standard mesh: 4.5 oz, 38 inch x 150-foot roll
- OCS or AkroFlex Reinforcing Standard mesh: 4.5 oz, 48 inch x 150-foot roll

Finishes

- AkroFlex: 100% acrylic finish
- AkroLastic: Elastomeric, 100% acrylic finish
- AkroSil: Silicon enhanced, 100% acrylic finish
- OmegaFlex: 100% acrylic finish
- ColorTek: Cementitious stucco finish¹

Applications

The Crack Isolation System may be applied in three different methods. In all three methods, completely embed mesh into the base coat and trowel smooth, ensuring that no mesh is visible. A minimum two-inch overlap is required at all mesh joints. After embedding mesh, the surface shall be left suitable for the application of an acrylic or a cementitious finish. See the appropriate Omega product data sheet for mixing and application instructions.

Method One

After application of the brown coat and before final set has occurred, fully embed mesh into the brown coat.

Method Two ¹

After brown coat has properly cured, apply the base coat over the brown coat a minimum of 1/16" (1.6mm) thick and completely embed mesh.

Method Three ^{1,2}

The finish surface must be clean and free of loose debris, dirt, dust, efflorescence, grease, oils, curing agents, and cleaning solutions. Painted or glossy surfaces may need to be roughened to ensure a proper bond of the base coat. The substrate must be structurally sound. Apply the base coat over the existing finish a minimum of 1/16" (1.6mm) thick and completely embed mesh.

Installation & Design Requirements

- Omega Crack Isolation System is intended to help mitigate surface cracking caused by natural cement shrinkage and minor external forces. It is not intended to be used to prevent larger cracks caused by significant external forces or large reoccurring loads, such as structural movement.
- Ideal system where excessive thermal movement may occur, such as in steel framed construction.
- Water curing is required per code and/or Omega Products specifications. See the appropriate Omega product data sheet for curing instructions.
- CI-Base, FoamTek, DryBond or StyroGlue DryBond base coats are recommended for use over existing rough or porous surfaces.
- DryBond, StyroGlue, or StyroGlue DryBond are required for use over painted surfaces.
- Additional information is available by contacting Omega Products International.

¹ To When applying Omega ColorTek or other cement-based finishes over CI-Base, the use of a bonding agent or acrylic admix is required to ensure proper bond. The recommended volume of admix to be used is one to two quarts of Omega AkroLoc or two to three quarts of Omega Admix 500 per 90-lb sack of ColorTex. Omega BondCrete or AkroLoc are recommended bonders. See the applicable Omega data sheet for additional information.

² When applying the Crack Isolation System over painted surfaces, a bond test should be done in multiple locations to assure that the base coat will properly adhere to the surface.

Disclaimer

Omega Products International, Inc. [Manufacturer] MAKES NO WARRANTY OF MERCHANTABILITY OR FITNESS FOR A PARTICULAR PURPOSE WITH RESPECT TO THE PRODUCT(S) SOLD HEREIN. The recommendations, suggestions, statements and technical data are based on the best knowledge available to Manufacturer and are given for informational purposes ONLY and without any responsibility for their use. It is expressly understood and agreed, as a condition of the use of this product, that the buyer's sole and exclusive remedy for any claimed defective product against Manufacturer shall be the replacement of products actually proven to be defective. Handling and use of the products are beyond

the control of Manufacturer; therefore, no warranty is made, expressed or implied, as to the results obtained from the use of the product or against any claims for infringement of patents resulting from use of the product. Under no circumstance shall Manufacturer be liable for incidental or consequential damages arising out of the use or the improper application of the product. Before applying the product, the user shall determine the suitability of the product for his/her independent use, assuming all risks and liability whatsoever in connection therewith. This writing constitutes a complete and exclusive statement of the understanding between Manufacturer and Buyer.

Claims

Any Claimant shall notify Manufacturer immediately in writing of any alleged defect in the material. Claimant will provide Manufacturer with a reasonable and exclusive opportunity to investigate and test for the alleged defect. For any claim that is not valid Claimant agrees to pay Omega's reasonable charges, including travel and labor associated with investigation of such claim.

Technical Assistance

Technical assistance and information is available by calling Omega Products International, Inc. at (800) 600-6634 or FAX (951) 520-2594 or by e-mail at info@omega-products.com.

Warranty

The following is made in lieu of all expressed and implied rights, warranties and conditions, statutory or otherwise. The manufacturer's only obligation shall be to replace such quantity of products proven to be defective within one year following the date of manufacture, provided that the alleged defective product is returned prepaid to the manufacturer's plant and is accompanied with proof of purchase and batch number.



The Professional's Choice